



**Bois** ★★★★★  
**Simonet**  
*camping village de chalets*



**ARDÈCHE - JOYEUSE**  
FRANCE





# SUMMARY

AN EXCEPTIONAL CAMPSITE

4

DISCOVERING THE ARDÈCHE

6

THE VILLAGE OF JOYEUSE

8

OUR CABINS

10

OUR MOBILE HOMES

14

OUR LODGE TENTS

16

OUR SITES

20

CAMPGROUND ACTIVITIES

22

THE MAP

24

GENERAL TERMS AND CONDITIONS

26

# AN EXCEPTIONAL CAMPSITE

The 4-star Bois Simonet Campsite guarantees you a family-friendly and friendly atmosphere where you can enjoy the tranquility of your vacation in the shade of the pines. Ideally located in the heart of southern Ardèche, you are close to many must-see sites (character villages, Pont d'Arc, Grotte Chauvet 2 ...). The rivers are also all nearby including the La Beume and its crystal clear waters which are only a 10-minute walk from the campground. Perfect for swimmers and fishermen!



## A natural, wild and preserved setting

You will also fall in love with the picturesque villages of Ardèche and the natural sites with exceptional and varied landscapes. Are you looking for peaceful and sunny holidays, freshness, swimming at sunset and appreciate being rocked by the song of cicadas? All in a wild and preserved natural setting... So don't hesitate and come join us in South Ardèche!

## A whole team at your service!

Enjoy your vacation with peace of mind, we are here for you! Our whole team is here to advise and guide you based on your desires and we take care of your bookings.



# DISCOVERING THE ARDÈCHE

Ardèche is an ideal destination for spending a few days with family, as a couple or with friends. Indeed, it is the perfect place to enjoy a break in the heart of a sumptuous nature. A true land of landscapes, Ardèche offers you an unforgettable experience thanks to a stay to escape in the heart of a land that is rich in history, activities and natural jewels. Whether you are looking for relaxation, an adrenaline rush or a lover of heritage, Ardèche is made for you. Sports, culture, heritage, nature, gastronomy, relaxation, you will find your happiness with this idyllic destination. Do not hesitate to discover the hidden treasures and gems of Ardèche for a fulfilling stay.

## The Gorges of Ardèche

32 kilometers of spectacular gorges in the heart of southern Ardèche! This is what lovers of grandiose landscapes can admire between Vallon-Pont-d'Arc and Saint-Martin-d'Ardèche... It took more than one hundred million years for the waters of the famous Ardèche river to carve a deep canyon. The result is breathtaking: an immense parade of limestone cliffs that can reach up to 300 meters high, all in a wild and preserved nature...





## THE VILLAGE JOYEUSE

This is our south...

In the collective unconscious, the word "South" inspires holidays in the sun, idleness, the sea and moments of happiness shared with family or friends. Certainly our village is not the "South" imagined by many holidaymakers, but we offer another version of the "South". First of all, Joyeuse is located in the South-East of France and in the South of the Ardèche. In this sense, we can take a small part of this coveted "South".



### A small medieval town

Small medieval town in southern Ardèche, which owes its name to Charlemagne's sword "the joyful", Joyeuse is famous for its market, the largest in southern Ardèche, which is held every Wednesday. It benefits from a Mediterranean climate and is located between the Cévennes and Provence.

### One of the most beautiful destinations in Ardèche

Vacationers are happy to be captivated by the beauty of the landscapes of Joyeuse and its surroundings. The village is also appreciated for the richness of its historical heritage, and has several emblematic places not to be missed.

# ACCOMMODATIONS OUR CABINS

The Bois Simonet chalet village has 52 accommodations including 40 wooden chalets, on the terrace, most of them without vis-à-vis, and in the shade of the pines.

With a capacity of 3 to 8 people, our chalets are all equipped with a kitchen, a bathroom and toilets. Some offer top-of-the-range services, with a modern, elegant and comfortable interior.

All our rentals are in perfect condition of cleanliness and functioning. We take the utmost care of our facilities and the safety of our customers.



Chalet GARRIGUE for 4 people: 25m2 with covered terrace. Parking next to the chalet. Ideal for a couple with 2 young children. In the shade of the pines. Equipped kitchen: microwave, gas, fridge, electric filter coffee maker, toaster. Bathroom with shower and toilet. Possibility to rent removable air conditioning on request (€60/week) and depending on available stock. Bedroom n°1: 1 bed of 140\*190  
Sleeping area: 2 bunk beds of 70\*190



Chalet JOKER for 2/3 people: 25m2 with covered terrace. Parking next to the chalet. Ideal for a couple with a child. Equipped with a television. Equipped kitchen: microwave, gas, fridge, electric filter coffee maker, toaster. Bathroom with shower and toilet. Possibility to rent removable air conditioning on request (€60/week) and depending on available stock. Bedroom n°1: 1 bed of 140\*190 + 1 bunk bed of 70\*190



Chalet BRUYERE for 4/5 people: 32m2 with large covered terrace. Parking next to the chalet. Quiet, in the shade of the pines. Equipped with a television. Equipped kitchen: dishwasher, microwave, gas, fridge-freezer, filter coffee maker, toaster. Bathroom with shower and toilet. Possibility to rent removable air conditioning on request (€60/week) and depending on available stock. Bedroom n°1: 1 bed 140\*190  
Bedroom n°2: 1 bed of 120\*190 + 1 bunk bed of 70\*190



Chalet LAVANDE for 4/5 people: 32m2 with large covered terrace. Parking next to the chalet. Quiet, in the shade of the pines. Equipped with a television. Equipped kitchen: dishwasher, microwave, gas, fridge-freezer, electric filter coffee maker, toaster. Bathroom with shower and toilet. Possibility to rent removable air conditioning on request (€60/week) and depending on available stock. Bedroom n°1: 1 bed of 140\*190  
Bedroom n°2: 1 bed of 120\*190 + 1 bunk bed of 70\*190



Chalet FOUGERE for 5/7 people: 30m2 with covered terrace. Parking next to the chalet. Dominant terrace and setting sun. Equipped with air conditioning and TV. The kitchen is open to the living area. It is fully equipped: microwave, gas, fridge-freezer, electric filter coffee maker, toaster. Bathroom with shower. Separate toilets. Bedroom n°1: 1 bed of 140\*190  
Bedroom n°2: 2 beds of 70\*190 that can be brought together to form 1 bed of 140\*190 + 1 bunk bed of 70\*190  
Living room: 1 sofa bed convertible into a 140\*190 bed

# SUITE OUR CABINS

Completely renovated in 2023!



**Chalet SEQUOIA for 5/7 people:** 34m<sup>2</sup> with covered terrace. Parking next to the chalet. Dominant and sunny terrace. Equipped with air conditioning and TV. The kitchen is open to the living area. It is fully equipped: microwave, gas, fridge-freezer, electric filter coffee maker, toaster. Bathroom with shower. Separate toilets. Bedroom n°1: 1 bed of 140\*190. Bedroom n°2: 3 beds of 80\*190 (including 1 bunk bed). Living room: 1 sofa bed convertible into a 140\*190 bed.

Completely renovated in 2023!



**Chalet ACACIA for 4/6 people:** 36m<sup>2</sup> with covered terrace. Parking next to the chalet. Quiet, out of sight, facing the mountain. Sunset. Equipped with air conditioning and TV. The kitchen is open to the living area. It is fully equipped: dishwasher, microwave, gas, fridge-freezer, electric filter coffee maker, toaster. Bathroom with shower. Separate toilets. Bedroom n°1: 1 bed of 140\*190. Bedroom n°2: 2 beds of 80\*190 that can be brought together to form 1 bed of 160\*190. Living room: 1 sofa bed convertible into a 140\*190 bed.



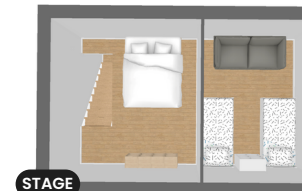
**Chalet EDELWEISS for 4/6 people:** 45m<sup>2</sup> with large covered terrace. Parking next to the chalet. Quiet, in the shade of the pines. Sunset. Equipped with air conditioning and a large television. The kitchen is open to the living area. It is fully equipped: dishwasher, microwave, gas, fridge-freezer, electric filter coffee maker, toaster. Bathroom with shower. Separate toilets. Bedroom n°1: 1 bed of 140\*190. Bedroom n°2: 2 beds of 80\*190 (including 1 bunk bed). Living room: 1 sofa bed convertible into a 140\*190 bed.



**Chalet MIMOSA for 5/7 people:** 42m<sup>2</sup> with large covered terrace. Parking next to the chalet. Quiet, in the shade of the pines. Sunset. Equipped with air conditioning and TV. The kitchen is open to the living area. It is fully equipped: dishwasher, microwave, gas, fridge-freezer, electric filter coffee maker, toaster. Bathroom with shower. Separate toilets. Bedroom n°1: 1 bed of 140\*190. Bedroom n°2: 3 beds of 80\*190 (including 1 bunk bed). Living room: 1 sofa bed convertible into a 140\*190 bed.



**Chalet MIMOSA BLEU for 6/8 people:** 50m<sup>2</sup> with veranda and terrace. Parking near the chalet for 2 vehicles. Equipped with air conditioning and TV. Equipped kitchen: dishwasher, microwave, gas, fridge-freezer, filter coffee maker, toaster. Bathroom with shower and toilet. Laundry room and storage area. Bedroom n°1: 1 bed of 140\*190. Bedroom n°2: 2 beds of 80\*190 that can be brought together to form 1 bed of 160\*190. Sleeping area: 2 bunk beds of 80\*190. Living room: 1 sofa bed convertible into 140\*190.



**SAVOYARD chalet for 6/8 people:** 80m<sup>2</sup>, on 2 floors, with veranda and large outdoor terrace. Parking next to the chalet for 2 vehicles. Mountain chalet spirit, quietly located in the shade of the pine trees. Equipped with air conditioning and TV. Equipped kitchen: dishwasher, microwave, gas, fridge-freezer, filter coffee maker, toaster. Bathroom with shower and toilet. Bedroom n°1 (Upstairs): 2 beds of 80\*190 that can be brought together to form 1 bed of 160\*190 and plenty of storage. Bedroom n°2 (Upstairs): 2 beds of 80\*190 that can be brought together to form 1 bed of 160\*190 + 1 sofa bed convertible into 140\*190. Living room (On the ground floor): 1 sofa bed convertible into 140\*190.

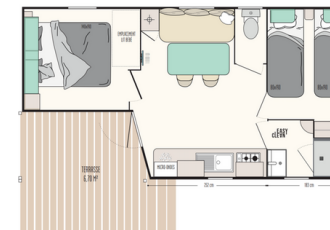


# ACCOMMODATIONS

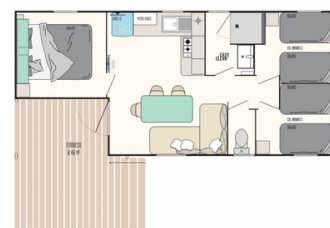
## NOS MOBIL-HOMES

On a plot of more than 3.7 ha., the Bois Simonet campsite offers 5 mobile homes, all equipped with a kitchen, a bathroom and toilets. The interiors are modern and comfortable, and the terraces are furnished with garden furniture and deckchairs. With a capacity of 4 to 8 people, we offer mobile homes with 2 to 3 bedrooms.

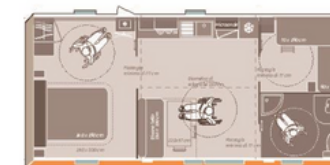
Whatever your formula, you can benefit from the equipment and services of a 4-star campsite, with all the useful and practical services to make your stay unforgettable.



**Mobil-Home GENET for 4/6 people: 22.5m<sup>2</sup> with covered terrace. Parking next to the mobile home.**  
 This model has 2 bedrooms. Located close to all amenities. Equipped with air conditioning and TV.  
 The kitchen is open to the living area. It is fully equipped: dishwasher, microwave, gas, fridge-freezer, electric filter coffee maker, toaster.  
 Bathroom with shower. Separate toilets.  
 Bedroom n°1: 1 bed of 140\*190  
 Bedroom n°2: 2 beds of 80\*190 that can be brought together to form 1 bed of 160\*190  
 Living room: 1 convertible dining bench 140\*190  
 Seniority: 0 to 5 years



**Mobil-Home CEDRE for 6/8 people: 28m<sup>2</sup> with covered terrace. Parking next to the mobile home provided for 2 vehicles. This model has 3 bedrooms. Equipped with air conditioning and TV.**  
 The kitchen is open to the living area. It is fully equipped: dishwasher, microwave, gas, fridge-freezer, electric filter coffee maker, toaster.  
 Bathroom with shower. Separate toilets.  
 Bedroom n°1: 1 bed of 140\*190  
 Bedroom n°2: 2 beds of 80\*190 that can be brought together to form 1 bed of 160\*190  
 Bedroom n°3: 2 beds of 80\*190 that can be brought together to form 1 bed of 160\*190  
 Living room: 1 convertible dining bench 140\*190



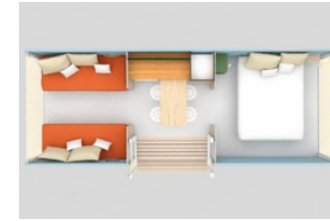
**Mobil-Home CHATAIGNIER - PMR for 4/5 people: 31m<sup>2</sup> with covered terrace and access ramp. Parking next to the mobile home. View of the neighboring mountain. This model will seduce you with its space and its large bathroom.**  
 This mobile home is also specially designed for people with reduced mobility. Wheelchair access possible in all rooms. Equipped with air conditioning and TV.  
 The kitchen is open to the living area. It is fully equipped: dishwasher, microwave, gas, fridge-freezer, electric filter coffee maker, toaster.  
 Bathroom with shower and toilet.  
 Bedroom n°1: 1 bed of 140\*190  
 Bedroom n°2: 1 bed of 90\*190 and 1 bunk bed of 80\*190  
 Living room: 1 convertible dining bench of 130\*90



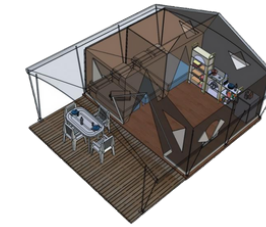
# ACCOMMODATIONS

## NOS TENTES LODGES

The lodge or the canvas bungalow, it's the camping spirit, the comfort in addition! With our 7 lodges, try to live the camping experience, since the lodge tents are equipped with all the kitchen necessities (fridge, table, chairs, and kitchen utensils), beds, pillows and blankets. A complete toilet block is located near the lodges.



**COCO SWEET for 2/4 people:** 17m2 with covered terrace. Parking next to the accommodation. You will be seduced by this new cozy and fully equipped 2-bedroom accommodation. Living room with fridge and table-top. Toilet block nearby. Equipped with the essentials for cooking. Bedroom n°1: 1 bed of 140\*190 and storage. Bedroom n°2 or living room: 2 beds of 80\*190 that can be brought together to form 1 bed of 160\*190



**Canvas bungalow CANADA for 4/5 people,** with covered terrace. Parking next to the lodge. You will be seduced by this type of accommodation equipped in a 2-bedroom model, with a coated canvas separation and a cotton facade. Living room with fridge and essentials for cooking with 1 gas stove with 2 burners. Toilet block nearby. The outdoor terrace is equipped with a garden table and 5 armchairs + 2 deckchairs + drying rack. Bedroom n°1: 1 bed of 140\*190 with pillows and blanket. Bedroom n°2: 3 beds of 80\*190 (including 1 bunk) with pillows and blankets.

All our chalets are in perfect state of cleanliness and functioning. We take the utmost care of our facilities and the safety of our customers.

Blankets, pillows and disposable mattress pads are provided (we advise you to bring your personal mattress pads for more hygiene), duvets and bolsters depending on the model. Our chalets are installed on the terrace and may pose some accessibility difficulties for people with reduced mobility. They are all equipped with garden furniture and 2 deckchairs. Single beds are 80 cm or 90 cm wide (depending on model). All our chalets are equipped with crockery and cookware. Their number is adapted to the maximum capacity of the number of people in the chalet.

A complete inventory of the chalet is available to the client on our website or on request. A welcome booklet is available in the chalet. It shows you how our service works, the "plus" services, regulations and safety on the campsite.

2 washing machines and a dryer are available in the toilet block. Ironing board and iron can also be requested at reception. WIFI on the whole site.

Note: The parents' bedroom in the Mimosa, Blue Mimosa, Edelweiss and Cèdre models are equipped with bolsters and pillows.

Photos and plans of the non-contractual chalets.



# SUITE

## OUR LODGE TENTS

Canvas bungalow CANADA for 6 people, with covered terrace. Parking next to the lodge.

You will be seduced by this type of accommodation equipped in a 3-bedroom model, with a coated canvas separation and a cotton facade. Located in a quiet area, out of sight, setting sun.

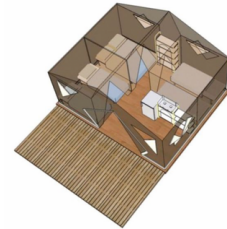
Living room with fridge and essentials for cooking with 1 gas stove with 2 burners.

Toilet block nearby. The outdoor terrace is equipped with a garden table and 6 armchairs + 2 deckchairs + drying rack.

Bedroom n°1: 1 bed of 140\*190 with pillows and blanket.

Bedroom n°2: 2 beds of 80\*190 with pillows and blankets.

Bedroom n°3: 2 beds of 80\*190 with pillows and blankets.



MASSAI canvas bungalow for 4/5 people, with covered terrace. Parking next to the lodge.

You will be seduced by this type of accommodation equipped in a 2-bedroom model, with a coated canvas separation and a cotton facade. Living room with fridge and essentials for cooking with 1 gas stove with 2 burners.

Toilet block nearby. The outdoor terrace is equipped with a garden table and 5 armchairs + 2 deckchairs + drying rack.

Bedroom n°1: 1 bed of 140\*190 with pillows and blanket.

Bedroom n°2: 3 beds of 80\*190 (including 1 bunk) with pillows and blankets.



# ACCOMMODATIONS OUR LOCATIONS

Pitches for tents, caravans, vans or motorhomes, shaded or sunny, small or large, you have the choice with our 18 bare pitches. All offer electricity as an option, and we also have a motorhome area.



# CAMPSITE ACTIVITIES

## An ideally located pool area

The 2 outdoor swimming pools are heated from the opening of the campsite until the end of September.

Deckchairs are arranged around the swimming pool to relax and laze under the sun.

A shower to cool off on the swimming pool deck.

## Friendly activities

Activities and entertainment for the whole family are offered throughout the day in high season (July and August): children's club, teen club, adult entertainment (ping-pong tournaments, petanque, water games and other sporting challenges... ). Aperitif games and themed evenings, everything is done to make your holidays unforgettable!



Moments with family or friends can also be shared around the swimming pool while the more athletic can join the pétanque court or the ping pong tables. Entertainment (concerts, children's entertainment) is also offered in high season. Our mascot will amuse the children. The opportunity for encounters and unforgettable memories for young and old alike!



## THE GENERAL MAP OF THE CAMPSITE

<b>Bungalow toilé 4/5 Personnes</b> Canvas bungalow 4/5 people	<b>Chalet Savoyard</b> Savoynard Cottage	<b>Chalet Séquoia</b> Sequoia Cottage	<b>Mobil-Home Cèdre</b> Cèdre Mobil-home	<b>Accueil</b> Reception	<b>Chalet gourmand</b> Gourmet chalet	<b>Espace Piscine</b> Pool area	<b>Tri sélectif et compost</b> Selective sorting and compost
<b>Bungalow toilé 6 Personnes</b> Canvas Bungalow 6 People	<b>Chalet Garrigue</b> Garrigue Cottage	<b>Emplacements Nus</b> Bare Pitches	<b>Mobil-Home Genet</b> Genet Mobil-home	<b>Aire de Jeux</b> Playground	<b>Chemin piéton</b> Pedestrian path	<b>Terrain de Pétanque</b> Pétanque	<b>Toilettes</b> Toilets
<b>Chalet Acacia</b> Acacia Cottage	<b>Chalet Joker</b> Joker Cottage	<b>Empl. attachés aux locatifs</b> Pitches attached to rentals	<b>Mobil-Home Chataigner (PMR)</b> Chataigner Mobil-home	<b>Espace Jeux Petite Enfance</b> Young children playing area	<b>Épicerie</b> Grocery	<b>Terrain Multisports</b> Multisports ground	<b>Sanitaires</b> Sanitary
<b>Chalet Bruyère</b> Bruyère Cottage	<b>Chalet Lavande</b> Lavande Cottage	<b>Espace saisonniers</b> Seasonal space	<b>Mobil-Home Laurier</b> Laurier Mobil-home	<b>Table de Ping Pong</b> Ping-Pong table	<b>Restaurant</b> Restaurant	<b>Départ randonnées</b> Departure Hikes	<b>Laverie</b> laundry
<b>Chalet Edelweiss</b> Edelweiss Cottage	<b>Chalet Mimosa</b> Mimosa Cottage	<b>Logement Gérant</b> Housing Manager	<b>Logement Insolite Coco Sweet</b> Unusual accommodation coco sweet	<b>Aire de service Camping-car</b> Motorhome service area	<b>Snack Bar</b> Snack Bar	<b>Parking</b> Car park	<b>Parking Handicapés</b> Disabled car park
<b>Chalet Fougère</b> Fougère Cottage	<b>Chalet Mimosa Bleu</b> Blue Mimosa Cottage			<b>Chalet d'animation Enfants</b> Children's entertainment chalet	<b>Espace Barbecue X3</b> Barbecue area		
<b>Chalet Heidi</b> Heidi Cottage							



## TERMS OF SALES (extract)

### Conditions of admission :

To be able to enter, settle and stay in the campsite, you must have been authorized by the village management or its representative. He has the obligation to ensure the good behavior and the good order of the places, as well as the respect of the rules of procedure. The fact of staying in the campsite implies acceptance of the provisions of these rules and the commitment to comply with them. After acceptance of these conditions, a rental contract is drawn up and signed for each stay booked, whether in a rental unit (chalet, MH or lodge) or on a bare pitch. This contract is nominative and any rental cannot be assigned or sublet. Minors are not accepted alone in the campsite.

The reservation only becomes effective after receipt of your 30% deposit (payable in 2 instalments) and confirmation from the village management. The latter will be the subject of a letter or an email from us within 8 days.

The customer does not benefit from the right of withdrawal for the purchase of accommodation services. It is the management itself that assigns pitches and/or rentals.

Regarding rentals (chalet/MH/lodge), the number of occupants (baby(ies) included) must not exceed the maximum capacity specified in the brochure depending on the type of accommodation. You will be asked for a deposit of 300 € for the rental. This will be returned to you on your departure after the inventory. Only one vehicle is included in the rental or on the pitch (except Mimosa, Mimosa Bleu, and Savoyard for 7/8 people where the 2nd vehicle is included in the price). Any additional vehicle must be parked at the entrance to the campsite and will be subject to additional charges.

The balance of the stay must be paid 30 days before the scheduled date of arrival, without reminder from us.

In the absence of payment within this period and/or if the customer does not occupy the accommodation within 48 hours of the scheduled arrival, the sums paid will be retained and the campsite reserves the right to cancel your reservation.

The payment of the balance can be staggered in several installments every month without additional cost.

Different payment methods are possible: ANCV, e-ANCV, credit card, bank check, bank transfer or cash.

For any rental booked less than 30 days before the scheduled arrival date, the total amount of the stay will be requested upon booking.

As for the camping pitches, the payment of your reservation is to be made at the time of your arrival. A deposit of €20 is required for the access badge to the site, this will be returned to you upon your departure.

If the location is not occupied by the customer within 48 hours of the scheduled date, the amount of the deposit will be retained and the reservation canceled.

### Cancellation stay & Cancellation insurance

Any cancellation must be notified to us in writing (email or registered letter). The administrative costs will be retained in all cases. You will be charged cancellation fees according to the scale below:

- Upon acceptance of the stay: 30% of the total amount.

- Less than 30 days before arrival: 100% of the total amount.

In the event of cancellation more than 30 days before the start of the stay, the amount of your deposit will be retained by the campsite.

In case of cancellation less than 30 days before the start of the stay, the total amount of the stay will be due.

This is why we strongly recommend that you take out cancellation insurance.

### CANCELLATION INSURANCE

Our establishment offers cancellation insurance with the company MEETCH. The conditions and details of the guarantees are specified on our website or on request. Insurance costs must be paid in full at the time of booking. However, insurance can be purchased within 15 days of booking. In the event of cancellation of a stay for reasons incumbent on the campsite, with the exception of cases of force majeure leading us to cancel for questions of safety of holidaymakers, the customer will obtain the reimbursement of all sums paid.

### LATE ARRIVAL

Any delay in taking the rental must be notified to us by e-mail or by telephone 24 hours before the scheduled arrival time. No deduction will be made for late arrival. The period initially booked will be charged. Visitor tax: Each visitor must pay a visit fee (5.50 € including access to the swimming pools) and is required to wear the bracelet q

### RECEPTION: ARRIVALS / DEPARTURES

Customers can arrive from 3 p.m. for rentals and 1 p.m. for pitches. Our reception closes at 7 p.m. out of season and at 8 p.m. in July and August. It is mandatory to report to the reception (as well as any visitors) before you can proceed with the installation. We would like to point out that it is strictly forbidden to pitch a tent next to the rentals (except for a special location - see directly with reception). We thank you for respecting the opening hours of the reception and the internal regulations of the site. We count on you to inform your visitors so that they do the same.

A welcome booklet is available in your rental and at the reception in paper version, as well as on our online drive in digital format. It includes other information such as the program of events, restaurant menus and takeaways, among others. You will also be able to find an inventory of the chalet which we ask you to check within 24 hours of your arrival. Within this period of time, you are required to inform us, in writing and with signature, of any breach or possible malfunction at the reception desk. We will take your observations into consideration when preparing the exit inventory. Any damage or incomplete cleaning will be charged to you. Broken dishes must be replaced before your departure or an amount will be deducted from your deposit according to the scale in force (available at reception and on our drive).

Departure before 10 a.m. for rentals and before 12 p.m. for pitches.

We recommend that you make an appointment as soon as possible at reception for your check-out (between 8 a.m. and 9:45 a.m. - last slot).

The rented accommodation must be left clean, dishes and refrigerator (defrosted), and the garbage cans deposited in the place provided for this purpose in the outer enclosure.

The dishwasher must be emptied and the dishes put away. Please do not remove the duvet covers when you leave the rentals that have them.

The cleaning deposit of 60 euros will be retained if your accommodation is not perfectly in order.

In the event of a dispute, the management reserves the right to return the deposit within 8 days of your departure in order to assess the damage suffered by the campsite.

If the departure takes place outside reception opening hours, the deposit checks will be returned to you by post within 72 hours. No possibility of departure at night (between 11 p.m. and 7 a.m.).

We remind you that in case of late arrival or early departure, the full amount of the stay is to be paid, there will be no refund. It is imperative and essential in all cases to notify us in advance.

### WEARING THE BRACELET

It is compulsory for all persons present in the campsite and for the duration of the stay to wear a bracelet, otherwise access to the site will be refused. This bracelet system is mainly used to prevent outsiders from entering the campsite and to ensure the safety of holidaymakers.

### NOISE AND SILENCE

Silence must be total between 11 p.m. and 7 a.m.

The occupants of the campsite are requested to make as little noise as possible and to avoid lively discussions which may disturb the neighborhood. Audio devices must be adjusted accordingly. Door and trunk closures should be as discreet as possible. Dogs and other animals should never be let loose. Nor can they be left on the campsite, even locked up, in the absence of their owners who are legally responsible for them.

### PETS

Your pet is welcome at the campsite (maximum 2 per pitch). We remind you that first or second category dogs are prohibited. It must be identifiable, that is to say chipped or tattooed. No animal will be accepted if it is not up to date with its vaccines: the vaccination record will be requested upon your arrival. He must be kept on a leash. Its presence in the toilets, in the enclosure of the swimming pools and the playgrounds is strictly prohibited. Pets are accepted in the restaurant (leash required).

### CIVIL LIABILITY INSURANCE

Be aware that each family must have civil liability insurance when staying at a campsite and that their own property must also be insured against theft, fire and the risk of explosion. A certificate of civil liability must be attached to your contract: it is issued free of charge by your insurance company.

### BARBECUES

The Ardèche prefecture prohibits the use of individual barbecues on the campsite.

4 collective barbecues have therefore been set up in a secure area behind the reception.

### POOLS

It is not allowed to reserve deckchairs with your towels or other means, if you are not staying at the pool. We give ourselves the right to remove unused bath towels from the deck chairs after a certain period of time.

Obligations: Wearing swimming trunks, taking a shower and a foot bath.

Prohibitions:

-Wearing Bermuda shorts/underpants/monokini/burkini

-Sun oil (cream tolerated)

- Wearing shoes (leave them at the entrance)

-Umbrellas in the swimming pool enclosure (pushchairs accepted)

-No toys, boats, balls, flippers, shovels, buckets, water guns, etc.

-Do not eat, drink, smoke, spit or chew gum.

Permissions: Small buoys or armbands for children (only those who cannot swim).

As this is a private swimming pool open to the public, the ARS imposes the same rules on us as for municipal swimming pools.

### RESPONSIBILITY

The campsite cannot be held responsible for any theft, loss, damage or incident of any kind whatsoever during or following a stay. Everyone is asked not to leave valuables in sight and to take all measures to avoid the temptation of theft and all security measures to prevent any incident.

Specific decisions can be taken by the management following the breakdown or decommissioning of certain equipment or by necessity to comply with safety standards and ensure the protection of customers.

### Play areas

They are reserved for the children of the campsite who must be supervised at all times by their parents. Please respect the age groups indicated on the panels for each of them. Access prohibited after 11 p.m.

### IMAGE RIGHTS

**You graciously authorize the Bois Simonet campsite to use the photos and videos of you and all the participants in your stay, which could be taken during the latter for the communication needs of the Bois Simonet campsite (brochure and campsite websites). Otherwise, please complete the box below:**

**I, the undersigned ..... do not authorize the campsite to reproduce, publish, edit or represent my image and that of all the participants in the stay, in the Bois Simonet campsite, for its advertising needs, or on any media whatsoever (paper, internet, audio, etc.).**

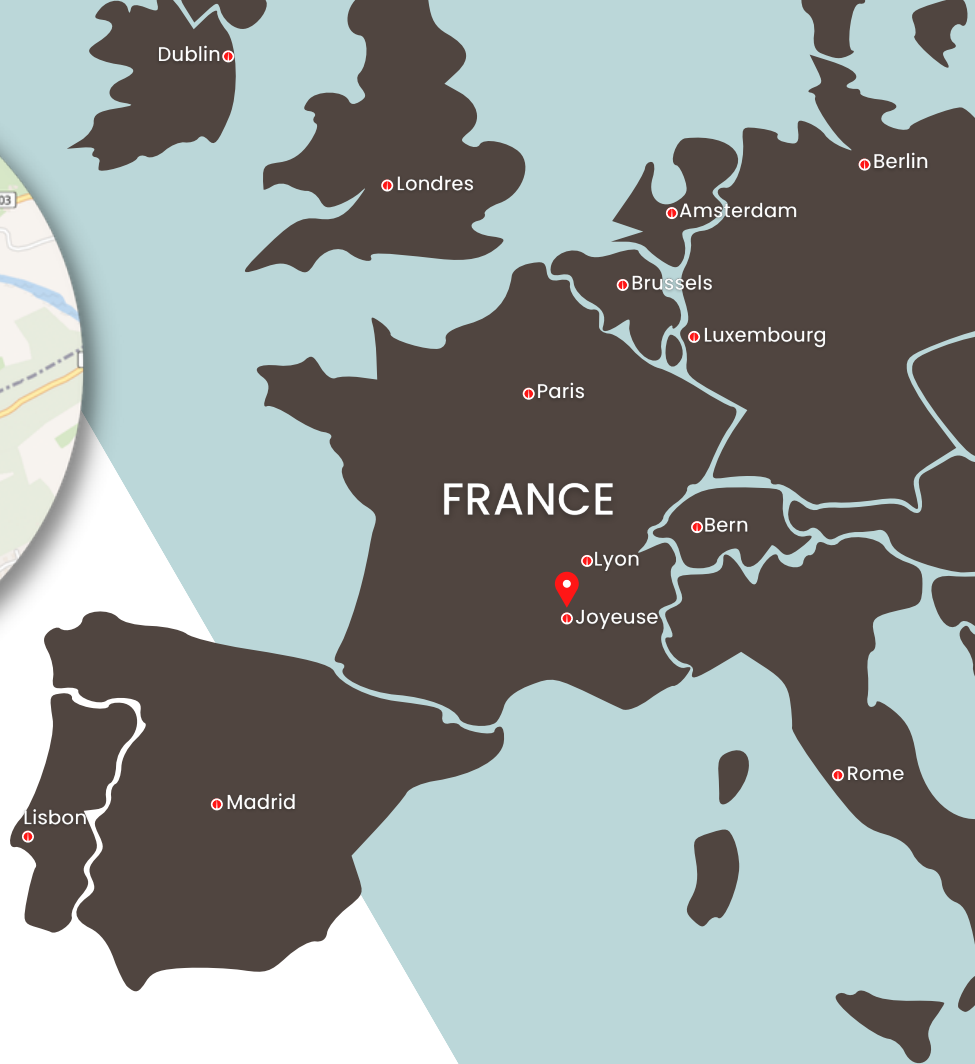
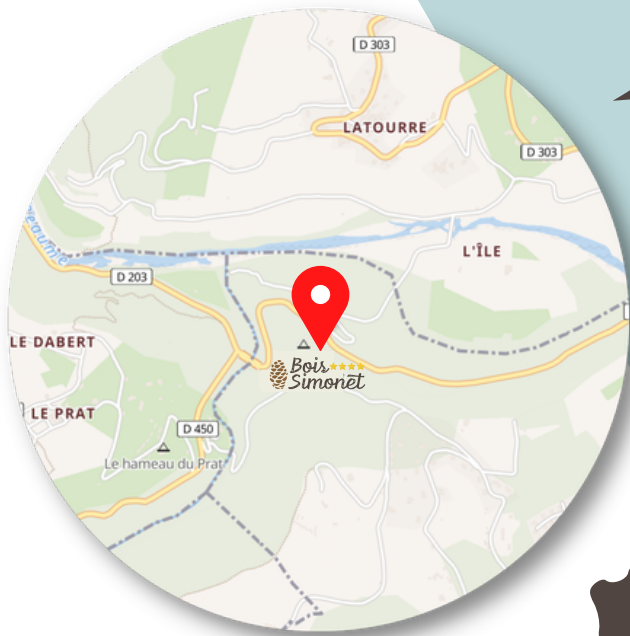
### ECO-CONTRIBUTION TAX

This "ecotax" contributes to the fees that the campsite must pay (household waste, waste water treatment, etc.). It is to be paid with the tourist taxes.

### VARIOUS

**No development can be carried out on the pitches without having obtained the prior authorization of the management.**

**Any consumption of illegal substances is strictly prohibited within the confines of our establishment.**



2771 Route de Valgorge 07260 Joyeuse - (Ardèche 07)

Tél. : +33 (0)4 75 39 58 60 - Fax : +33 (0)4 75 39 46 79

contact@bois-simonet.com

Infos & booking : [www.bois-simonet.com](http://www.bois-simonet.com)



GPS : Latitude : N 44.4804355 - Longitude : E 4.2348890 Siret : 387 708 423 00018 - APE 5530Z